



## SecurID Ready Implementation Guide

### Rainbow iKey 2000

Last Modified 06/18/01

#### 1. Partner Information

Partner Name	Rainbow Technologies
Web Site	<a href="http://www.rainbow.com/ikey2000/index.html">http://www.rainbow.com/ikey2000/index.html</a>
Product Name	iKey 2000 Series
Version & Platform	iKey 2000, iKey 2032
Product Description	Rainbow's iKey 2000 is an inexpensive identity token that can be used on any universal serial bus (USB) equipped workstation. The iKey provides the reliability, simplicity, and security of smartcards and cryptographic tokens without the complication and cost of a reader. iKeys are small and lightweight, making them easy to carry on a keychain or in an appointment book. Like smartcards, iKeys have thousands of applications, many of which were previously solved with passwords. iKeys contain memory for personal information and credentials, as well as an independent processor for authentication and network security applications.
Product Category	Authentication, Smart Cards, Tokens



#### 2. Contact Information

	Pre-Sales	Post-Sales
E-mail	<a href="mailto:sales@rainbow.com">sales@rainbow.com</a>	<a href="mailto:techsupport@rainbow.com">techsupport@rainbow.com</a>
Phone	1-800-852-8569	1-800-959-9954
Web	<a href="http://www.rainbow.com">www.rainbow.com</a>	<a href="http://www.rainbow.com">www.rainbow.com</a>

### **3. Solution Summary**

---

<b>Feature</b>	<b>Details</b>
Authentication methods supported	Native SecurID
New PIN support	All
Next tokencode support	Yes
Secondary server support	Slave ACE/Server
Location of node secret on client	%SystemRoot%\System32 or system registry
ACE/Server client definition type	Net OS
SecurID user specification	Designated users
SecurID protection of administrators	Yes

---

### **4. Product Requirements**

The computer on which you install the Rainbow iKey software must be running one of the following Microsoft operating systems:

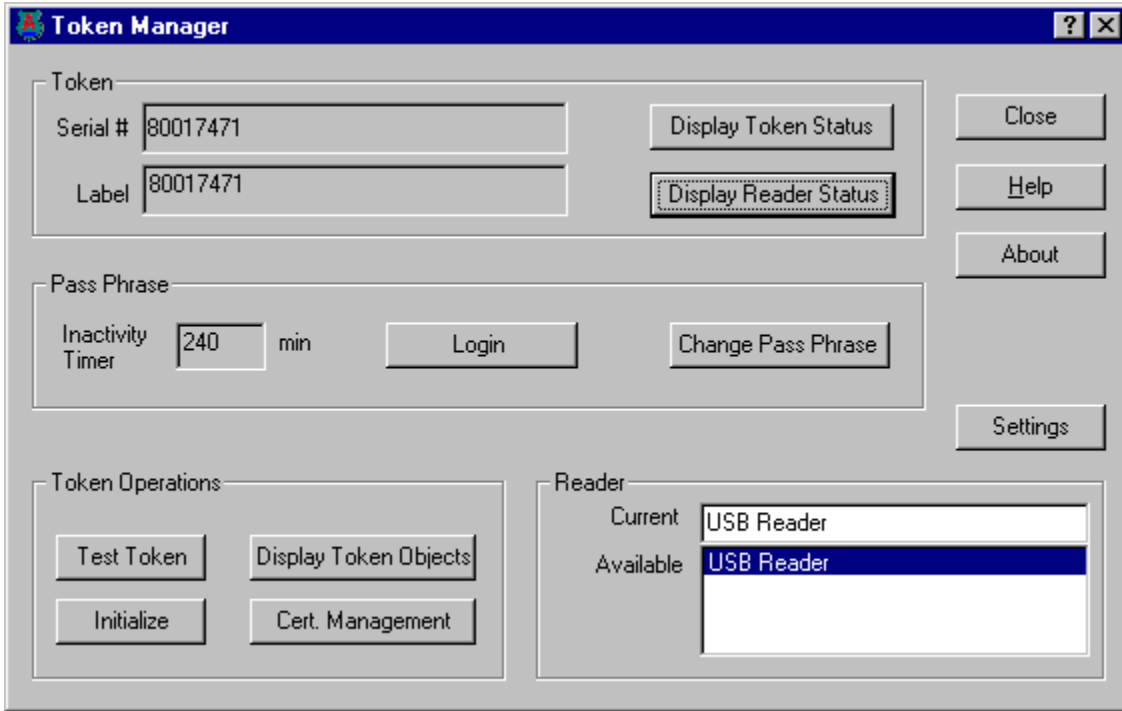
- Microsoft Windows 95
- Microsoft Windows 98
- Microsoft Windows NT 4.0
- Microsoft Windows2000

Your computer must have a 486 or later processor and a minimum of 8 Mbytes of RAM (16 Mbytes is recommended).

Your computer must also have an available USB port for the token reader.

## 5. Partner ACE/Agent configuration

Before attempting to use the Rainbow iKey 2000 and CIP (Cryptographic Interface Provider) Software with the RSA SecurID Software Token v2.5, make sure that your USB reader is installed and operating properly. Also ensure you have installed the CIP software according to the specifications outlined in the *iKey 2000 Series User's Guide*. You can verify that the token and reader have been installed properly by starting the Token Manager utility:



*Figure 1 – Token Manager Utility*

Use the **Display Reader Status** button in the Token Manager utility to ensure that the components are working properly. Refer to the *iKey 2000 Series User's Guide* for more information on using the Token Manager utility.

## RSA SecurID Ready Implementation Guide

In order to enable the SecurID Software Token to use the Rainbow iKey 2000, you must install the **RSA SecurID Smart Card Components**. Run **RSA\_SecurID\_smart\_card\_installation.exe** and follow the installation prompts. When you reach the screen entitled **Select Components** choose **RSA SecurID Smart Card software without drivers**.

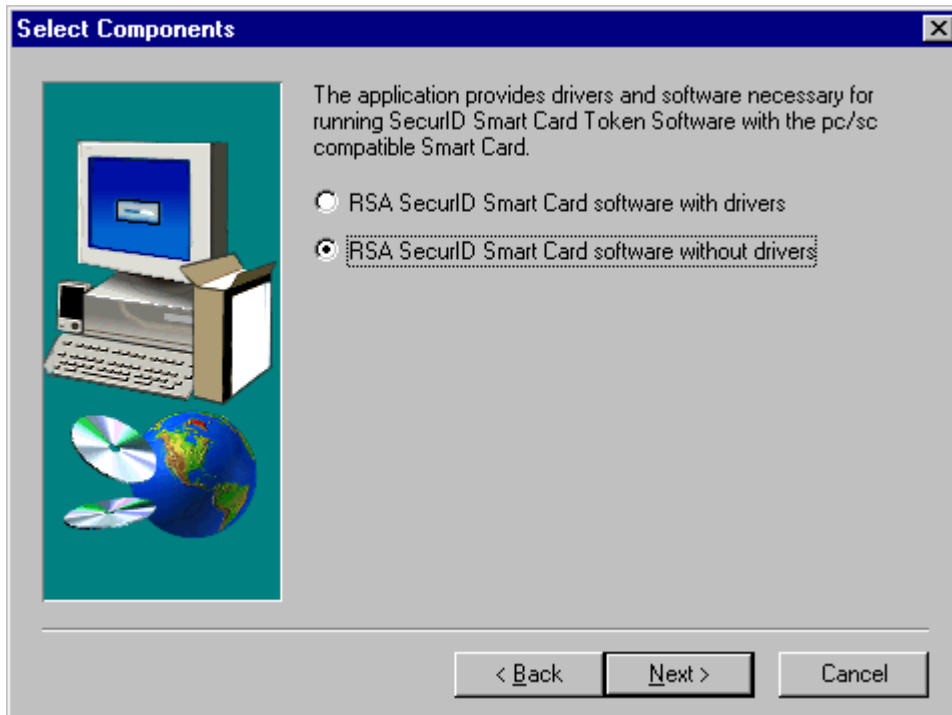


Figure 2 – SecurID Smart Card Components Install Screen

When the install has completed, you can launch the reader selection utility by going to **Start...Programs...RSA SecurID Smart Card...Reader Selection** where you will see the following screen:

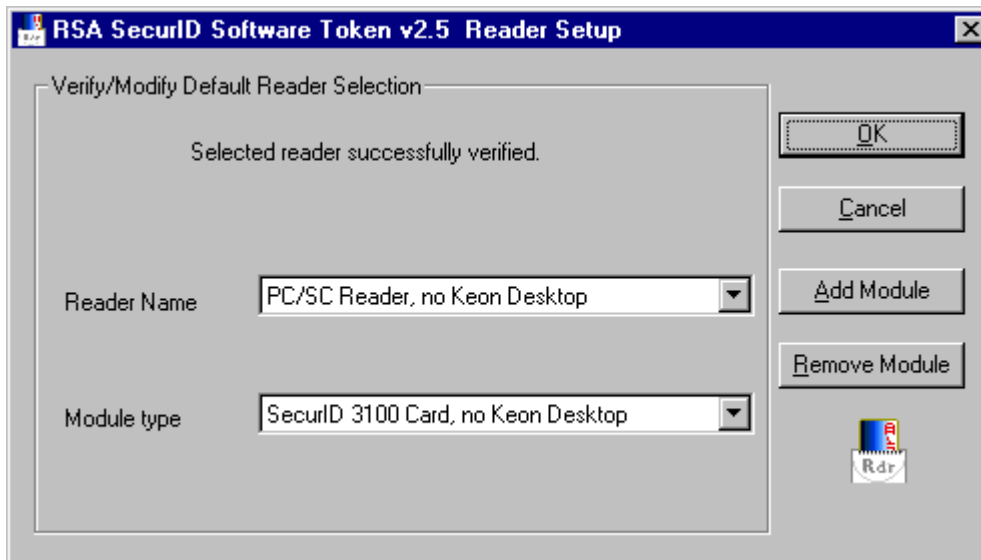
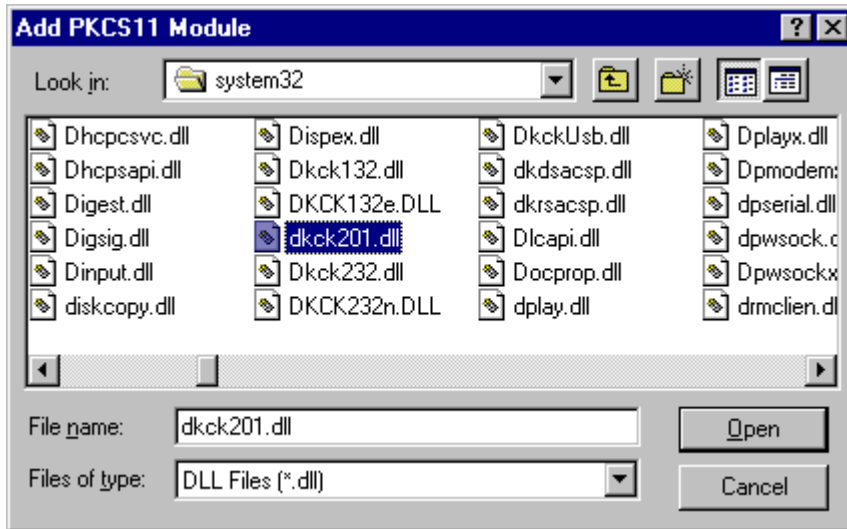


Figure 3 – Reader Selection startup screen

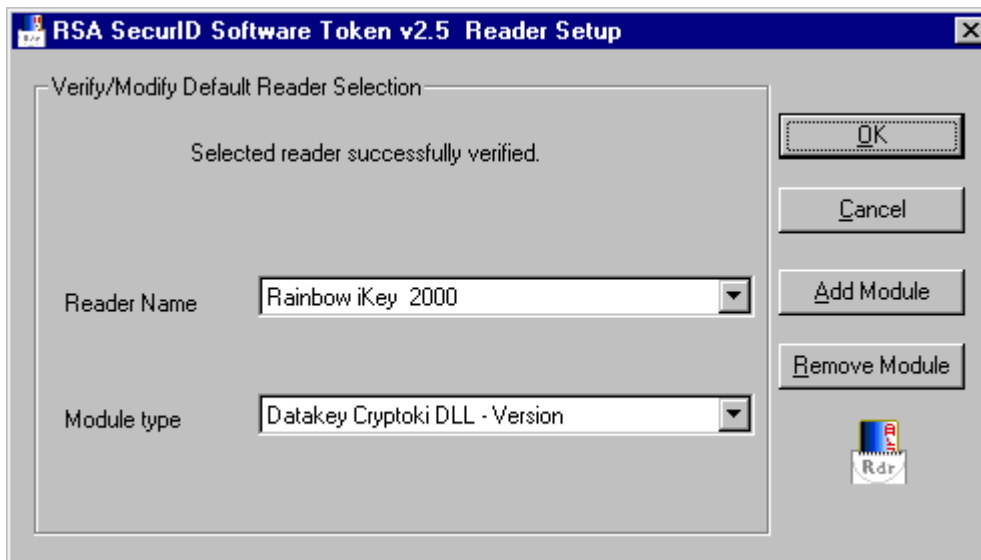
## RSA SecurID Ready Implementation Guide

Choose the **Add Module** button:



*Figure 4 – Adding the PKCS11 Module*

The **dkck201.dll** module is Rainbow's implementation of the Cryptoki Version 2.01 API. By default this is installed in %SystemRoot%\System32 when you install the CIP software. Browse to the file and select **Open**. You will be returned to the Reader Setup screen where you should receive the message **Selected reader successfully verified**:



*Figure 5 – Successful installation of module*

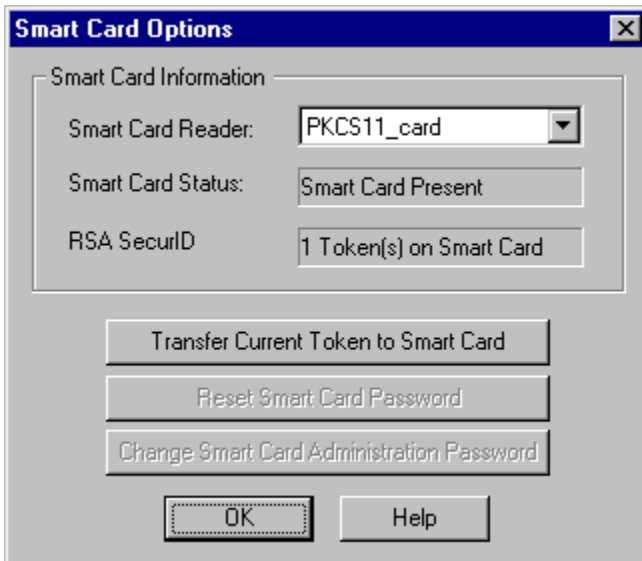
## RSA SecurID Ready Implementation Guide

Next, start The **RSA SecurID Software Token** from the Start Menu:



*Figure 6 – Software Token main screen*

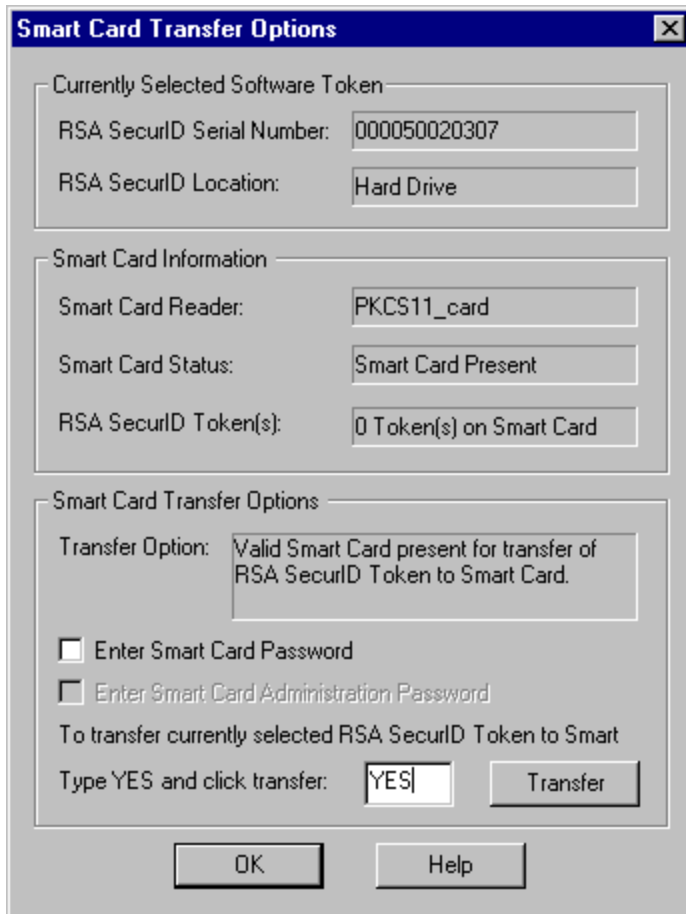
Choose **Options...Smart Card Options**. The Smart Card Reader will read **PKCS11\_card**, and the Smart Card Status should read **Smart Card Present**:



*Figure 7 – Smart Card Options screen*

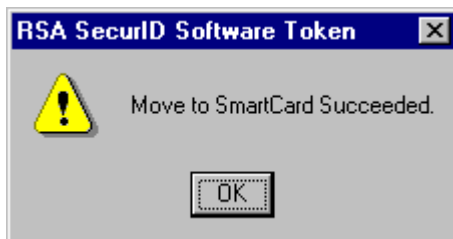
## RSA SecurID Ready Implementation Guide

Select **Transfer Current Token to Smart Card** and follow the dialog for transferring the token seed record to the smart card:



*Figure 8 – Transferring the seed record*

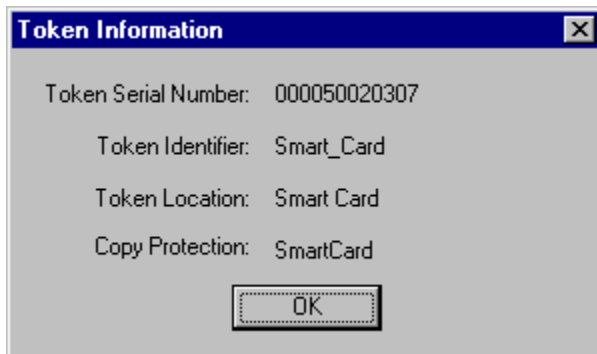
You should see the following message indicating that the transfer has succeeded:



*Figure 9 – Successful transfer message*

## *RSA SecurID Ready Implementation Guide*

You can verify that the token seed record has been successfully transferred by selecting **Options... Token Information:**



*Figure 10 – Token Information*

The Rainbow iKey 2000 is now ready for use with all applications that support the RSA SecurID Software Token. For more information on working with the SecurID Software Tokens and smart cards, consult the ***RSA SecurID Software Token Administrator's Guide***.



## 6. Certification Checklist

Indicate here the tests that were run to ensure the product is SecurID Ready:

Test	Pass	Fail
<b>1<sup>st</sup> time auth. (node secret creation)</b>	<input type="checkbox"/> <b>P</b>	<input type="checkbox"/>
<b>New PIN mode:</b>		
<b>System-generated</b>		
SecurID Software Token	<input type="checkbox"/> <b>P</b>	<input type="checkbox"/>
<b>User-defined (4-8 alphanumeric)</b>		
SecurID Software Token	<input type="checkbox"/> <b>P</b>	<input type="checkbox"/>
<b>User-defined (5-7 numeric)</b>		
SecurID Software Token	<input type="checkbox"/> <b>P</b>	<input type="checkbox"/>
<b>User-selectable</b>		
SecurID Software Token	<input type="checkbox"/> <b>P</b>	<input type="checkbox"/>
<b>Next Tokencode mode</b>		
SecurID Software Token	<input type="checkbox"/> <b>P</b>	<input type="checkbox"/>
<b>Slave ACE/Server</b>	<input type="checkbox"/> <b>P</b>	<input type="checkbox"/>
<b>No ACE/Server</b>	<input type="checkbox"/> <b>P</b>	<input type="checkbox"/>

## 7. Known Issues

*If you receive a Dr. Watson error when attempting to select dkck201.dll in the card reader selection utility, then contact RSA Security Customer Support for a patch to **reader.exe** that resolves this issue*

*When using the reader selection utility, upon adding the dkck201.dll PKCS#11 module, the utility may hang. If this occurs, stop the application (reader.exe) from the task manager and restart the program. You will then be able to select the Datakey reader and module from the drop-down menu.*